

Performance Measurement Case Study

PROBLEM:

The right class size is imperative to delivering the right type of education and classroom approach. By failing to evaluate the metrics most crucial to the University, it remained exposed to potentially poor learning environments.

SOLUTION:

Implemented the Sikich Performance Measurement Platform (PMP) to evaluate four key performance indicators by Department and College.

- Utilization
- Seat Count
- Tuition Analysis
- Credit Hour Allocation

RESULT:

- Brought accountability to Department and University level.
- Visually illustrated past performance. Past and future KPIs will be stored within PMP.
- Demonstrated potential cost savings, shifting courses to alternative formats.
- Improved accuracy of data collection for Seat Count KPI.



Industry:
University

University Profile:

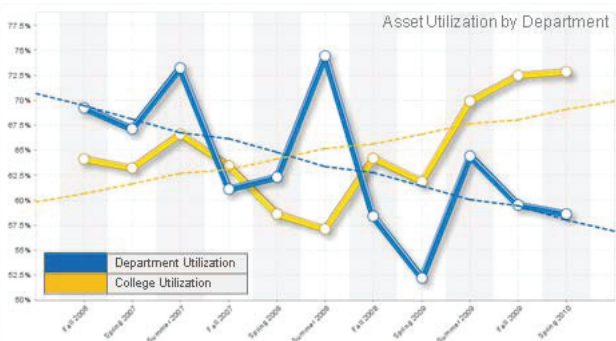
Public University

Enrollment: > 5000

Departments: 5

Degree Programs: 30

Case Study: University



Sikich offers performance measurement services to all industries, including commercial businesses, nonprofit, and governmental entities. Sikich Performance Measurement consultants access the expertise of industry specialists to develop meaningful key performance indicators (KPIs) that are displayed on scorecards and dashboards on our reporting solution, Sikich PMP.


To learn more about these services, please contact:



Thomas E. Bayer, CPA, CSPM
(Certified in Strategic Performance Management)
Partner-in-Charge
Performance Measurement Services
217.793.3363

Offices

Naperville, IL [Corporate Office]
Chicago, IL
Decatur, IL
Rockford, IL
Springfield, IL
Indianapolis, IN
St. Louis, MO



Visit us online at www.sikich.com

- Find services and products specific to your industry
- Sign up online for an upcoming seminar or event
- Request a proposal
- Sign up for Sikich's Newsletter "The Edge"
- Request a guest speaker
- Meet our people
- Learn more about our firm's culture and history